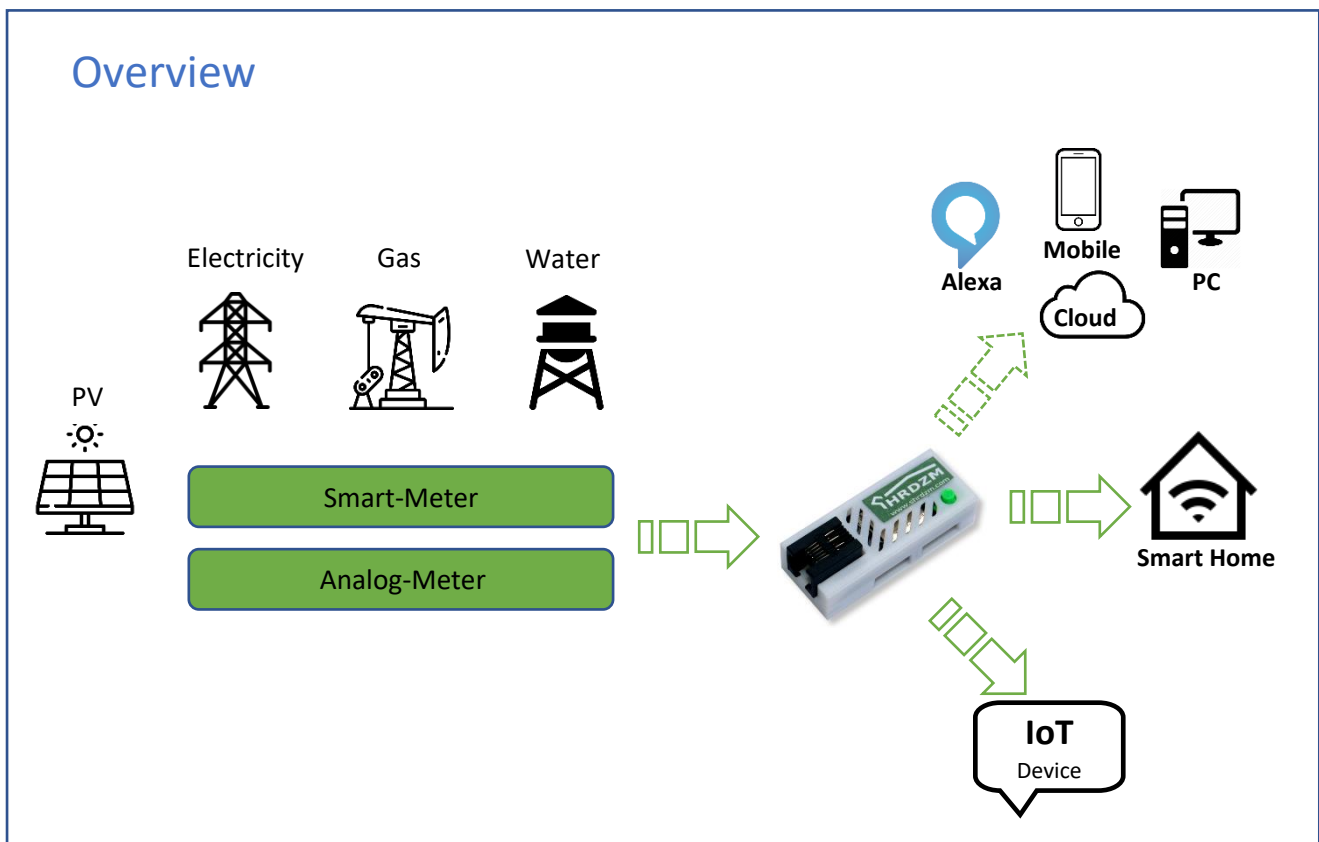




## Features

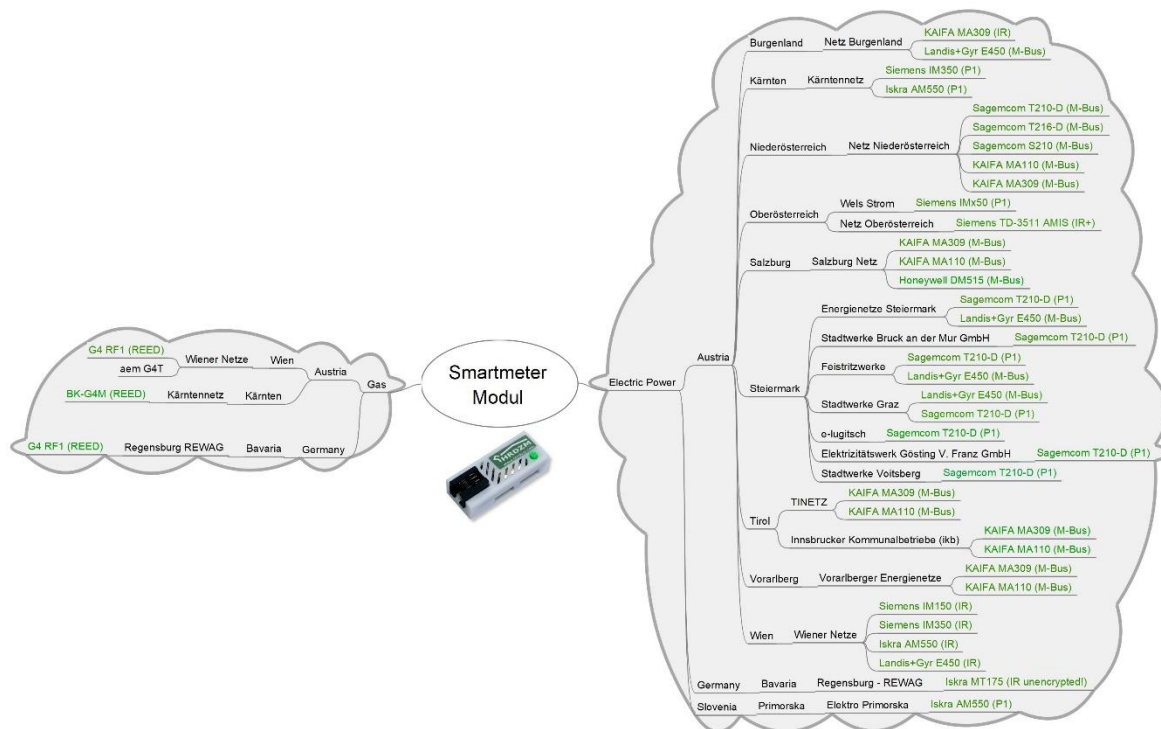
- Generic Modul for MBus/P1/IR Smartmeter [Auto-detect] and analog Meters [Electricity/Gas/Water]
- Decryption Onboard
- Open Protocols
  - MQTT
  - Webservices (REST/JSON)
- Direct Integration of Volkszaehler and Thingspeak
- Controlling Devices on Limit violation
- Prepared for Alexa/Mobile Integration
- Full Cloud-Less usage possible

## Overview



Power Supply	DC 5V via Micro-USB
Environment Temperature	From -10°C to +55°C
Humidity	<= 80% REH, not condensing
Supported Hardware Interfaces	IR, MBUS, DSMR/P1 serial, HALL, REED
WLAN	Wi-Fi 802.11 b/g/n 2,4 GHz with WPA/WPA2 PSK
Energy consumption	<= 1 Watt, depending on WLAN Signal Strength and Smartmeter HW Interface
Size	57x23x19mm
Mounting	Hat Rail, Wall Mount, Adhesive Mounting
Output Protocols	MQTT, Webservice (REST), Volkszaehler.org, Thingspeak
Modul Integrations	LowLevel SHRDZM Gateway, WLAN direct
Cloud [optional]	Alexa, Mobile, Web
Interoperability	FHEM, ioBroker, HomeAssistant, Loxone and all* other open HomeAutomation solutions, All other SHRDZM Platform Sensor Modules

## Supported Smartmeter\*\*



\* For specific solution please contact our support

\*\* as per 28.02.2023, number grow continuously